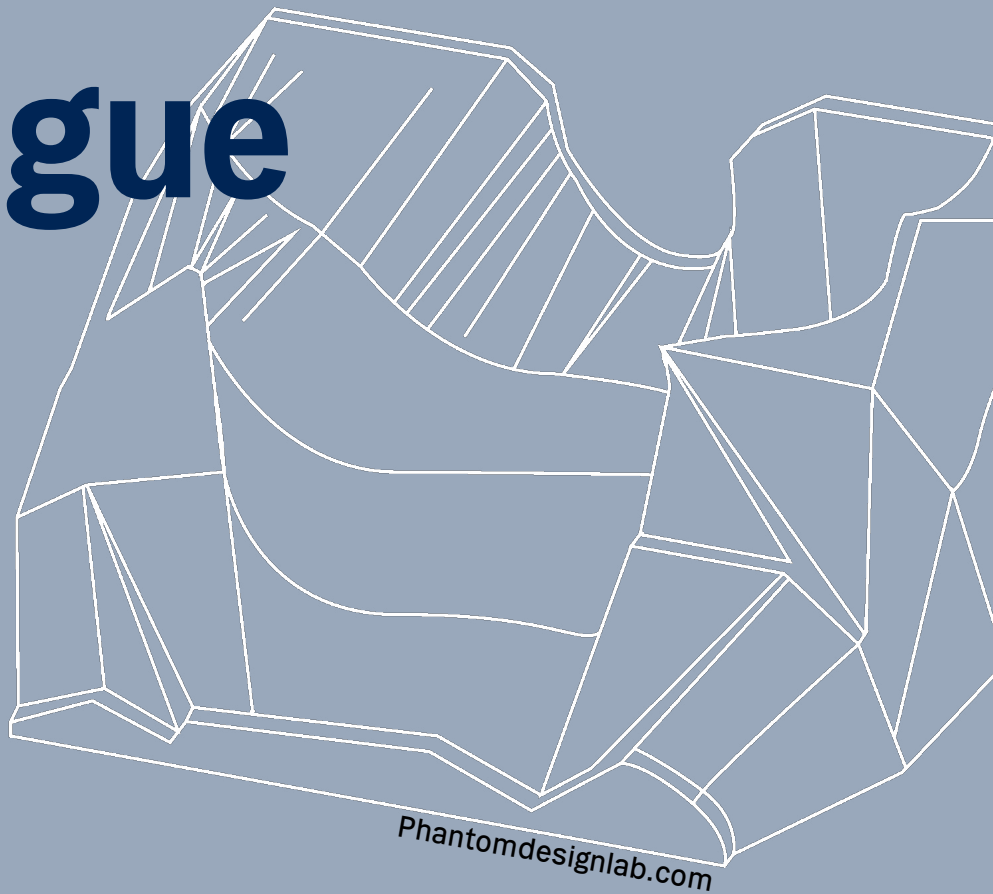


Phantom Design LabTM

Catalogue 2021



Phantomdesignlab.com

CAMES Copenhagen Academy for
Medical Education and Simulation

Phantom Design Lab™ - Catalogue 2021

CAMES - Copenhagen Academy for Medical Education and Simulation

2021 © CAMES, Rigshospitalet (Work in Progress)
All rights reserved.

Text, drawings and pictures is protected by Danish Copyright Law. Any analogue, digital or other reproduction or replica off this publication or parts hereof, is not allowed pursuant to Danish Copyright Law. The publication or parts hereof can ONLY be reproduced or replicated with written permission from CAMES.

Graphic Design and drawings: Sarah Bach-Pedersen
Pictures: Sarah Bach-Pedersen & Morten B.S. Svendsen
Text: Sam Kondo Steffensen, Morten B.S. Svendsen & Helle Dam, Vilma Louise Johnsson

Digitally published in Denmark 2021

Phantom Design Lab™
CAMES

Ryesgade 53b
2100 København Ø

+45 38 66 46 31
phantomdesignlab@regionh.dk (?)
phantomdesignlab.com

ABOUT Phantom Design Lab™

Phantom Design Lab™ is a specialized clinical design and development unit operated by CAMES* Rigshospitalet in The Capital Region of Denmark.

Phantom Design Lab™ designs and produces medical phantoms for education and simulation training, providing medical students, nurses, and clinical professionals with the optimal realistic hands-on training experience.

The Lab focuses on designing products that in evidence-based manner support and ultimately increase the quality and safety of various patient treatments. Additional focus is on material science and re-use, aligning with sustainability and pricing-oriented procurement principles.

The creation of Phantom Design Lab™ originates from many years of close cooperation with leading medical institutions and clinicians, combined with many years of joint innovative efforts in providing the best educational training within healthcare.

While now offering our well-tested products at scale, Phantom Design Lab™ is launched as a design and development lab, welcoming need-based ideas and collaboration with clinical practitioners, educators, researchers, and innovative minds.

Hence, the Phantom Design Lab™ is always looking for new ways to expand our phantom repertoire and range of cooperation. We welcome new contacts, thoughts, and ideas.

Contact:

* Copenhagen Academy for
Medical Education and Simulation

Contents

Suture Pads	5
Vaccination Pad	6
General Ultrasound Trainer	7
Vascular Access Ultrasound - REBOA	8
Vascular Access Ultrasound - CVC	9
Ultrasound guided aspiration – UGA trainer	11
Chorionic Villus Sampling – CVS model	12

Suture Pads



Training and assessment of suturing. Designed to be standalone, not requiring external holders etc.

Medical Skills

- Basic surgical skills in suturing.
- Variants available for training and assessment.

Product Qualities

Speciality

- All

Procedure

- Suturing

Equipment/Replacement parts

- Silicone pad
- Sutures

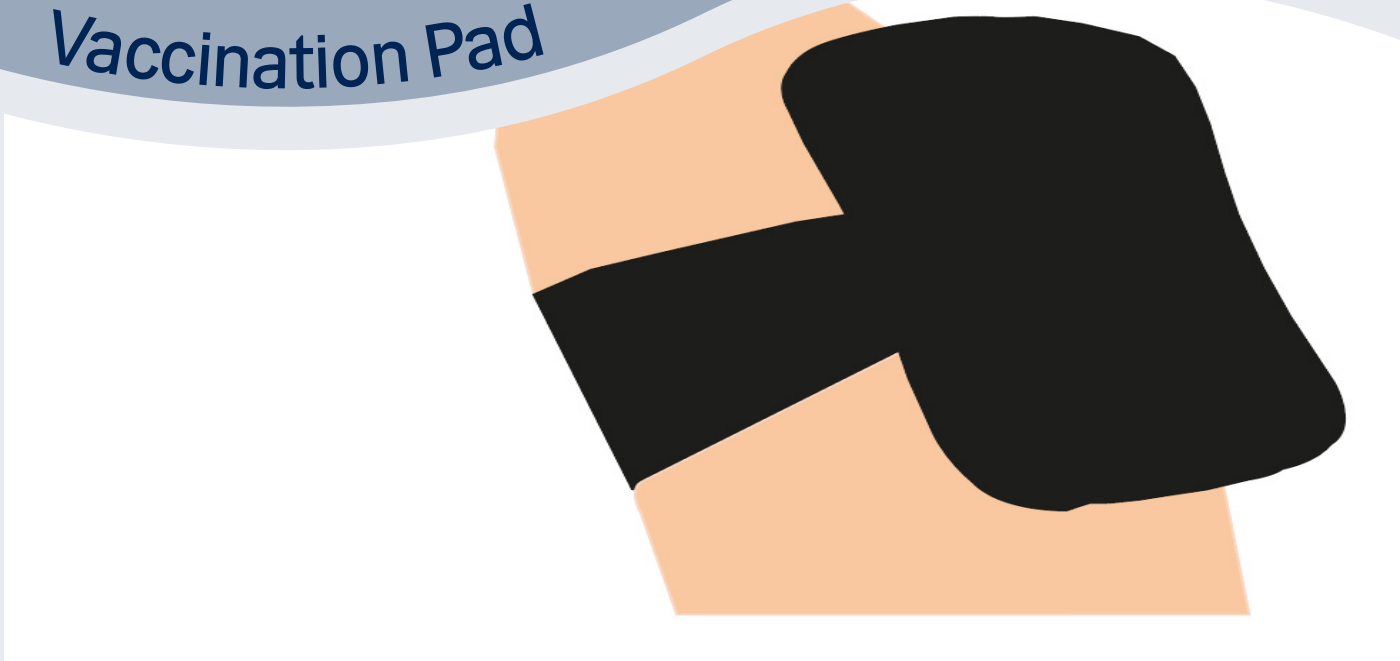
Safety

- Latex free
- Should not be used on absorbant surfaces for extended periods of time. E.g. raw wooden table etc.

Cleaning and care

- The product is machine washable and tolerates most household soaps.
- The product will outlast the need for training

Vaccination Pad



Injection trainer pad with a authentic feel like tissue for vaccine injections techniques. The layers in the pads are epidermis and muscle layers. The pad has a strip, you can attach to an arm or leg, so you simultaneously can incorporate communication with the patients in the learning practice.

Medical Skills

- Cras Blandit
- Lorem Ipsum
- Cras Blandit
- Lorem Ipsum

Product Qualities

Speciality

- Cras Blandit
- Lorem Ipsum

Procedure

- Cras Blandit
- Lorem Ipsum

Equipment/Replacement parts

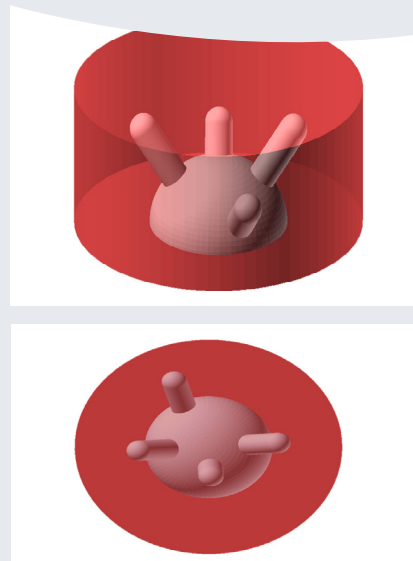
- Cras Blandit
- Lorem Ipsum

Safety

- Cras Blandit
- Lorem Ipsum

Cleaning and care

- Cras Blandit
- Lorem Ipsum



The phantom is intended for practicing the hand eye coordination in connection to ultrasound guided needle puncture.

Medical Skills

- Basic understanding of ultrasound imaging
- Ultrasound needle guidance

Product Qualities

Speciality

- Urology
- Radiology
- ENT
- Respiratory medicine
- Basic skills

Procedure

- Any which incorporates ultrasound guided needle handling

Equipment/Replacement parts

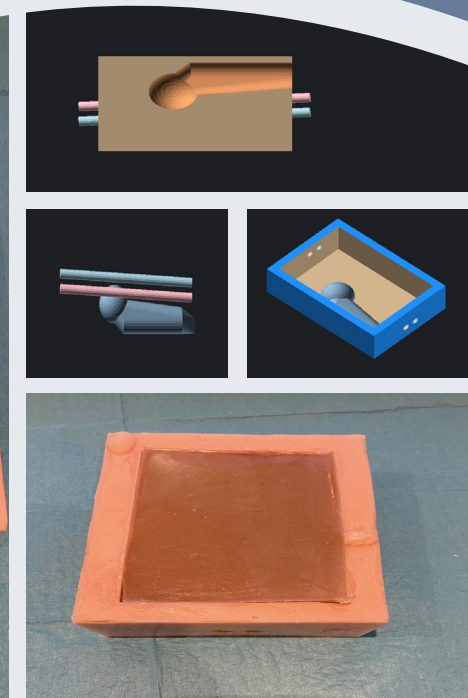
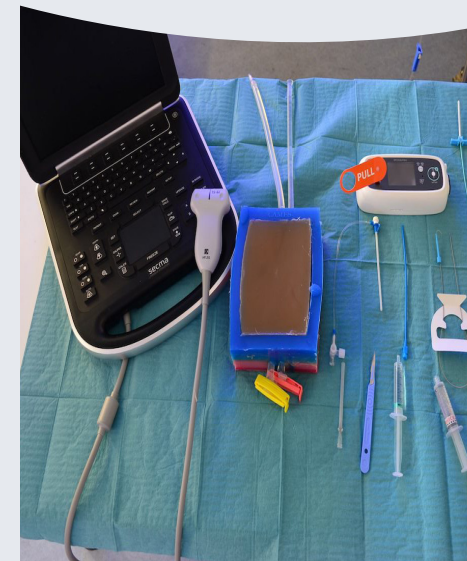
- One ultrasound compatible block
- Echogenecity (grey intensity) and transparency can be modified

Safety

- Latex free

Cleaning and care

- The phantom can be refreshed by heat treatment



The phantom can be used for training vascular access in the femoral triangle. Both venous and arterial access is possible.

Medical Skills

- Ultrasound guided vascular access
- Vascular access

Product Qualities

Speciality

- Emergency medicine
- Vascular surgery
- Interventional radiology

Procedure

- Procedures involving femoral vascular access

Equipment/Replacement parts

- Ultrasound compatible biomimicking block
- Tubing for arteries
- Silicone enclosure

Safety

- Latex free

Cleaning and care

- The ultrasound block is reusable and can be renewed by heating

The Phantom is a realistic training model for teaching ultrasound guided central line management and insertion of the central venous catheter into the superior vena cava.

Medical Skills

- Cras Blandit
- Lorem Ipsum
- Cras Blandit
- Lorem Ipsum

Product Qualities

Speciality

- Cras Blandit
- Lorem Ipsum

Procedure

- Cras Blandit
- Lorem Ipsum

Equipment/Replacement parts

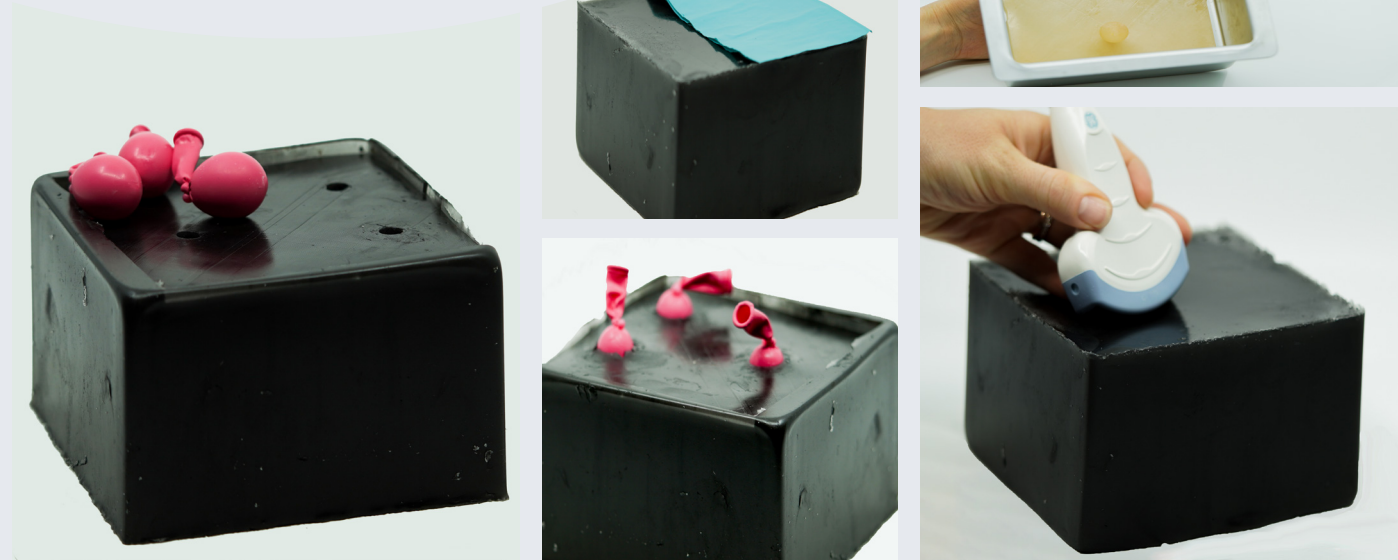
- Cras Blandit
- Lorem Ipsum

Safety

- Cras Blandit
- Lorem Ipsum

Cleaning and care

- Cras Blandit
- Lorem Ipsum



Training of skills to be used for invasive ultrasound guided procedures.

Medical Skills

- Basic understanding of ultrasound imaging
- Managing different probe-movements
- Ultrasound guided needle handling
- Needle aspiration
- Hand-eye coordination

Product Qualities

Speciality

- Any specialty performing invasive ultrasound guided procedures

Procedure

- Any procedure involving ultrasound guided needle handling

Equipment/Replacement parts

- One ultrasound compatible block
- Waterfilled balloons

Safety

- No use of animal products

Cleaning and care

- The model can be refreshed by heat treatment
- The balloons are one time use only



The intended use of the model is to be used for training and assessment of skills in performing the CVS procedure and/or amniocentesis.

Medical Skills

- Ultrasound guided needle puncture and aspiration
- Ultrasound imaging
- Hand-eye coordination

Product Qualities

Speciality

- Gynecology
- Obstetrics

Procedure

- Chorionic Villus Sampling
- Amniocentesis

Equipment/Replacement parts

- Top-layer: Ultrasound compatible biomimicking block
- Placenta: Size and position can be modified
- Amniotic cavity: Size can be modified
- Silicone fetus

Safety

- No use of animal products

Cleaning and care

- The top-layer is reusable and can be refreshed by heat treatment.
- The placenta and amniotic cavity are one time use and must be replaced between training sessions

Phantom Design Lab

+45 38 66 46 31

phantomdesignlab@regionh.dk (?)

phantomdesignlab.com

CAMES Copenhagen Academy for
Medical Education and Simulation