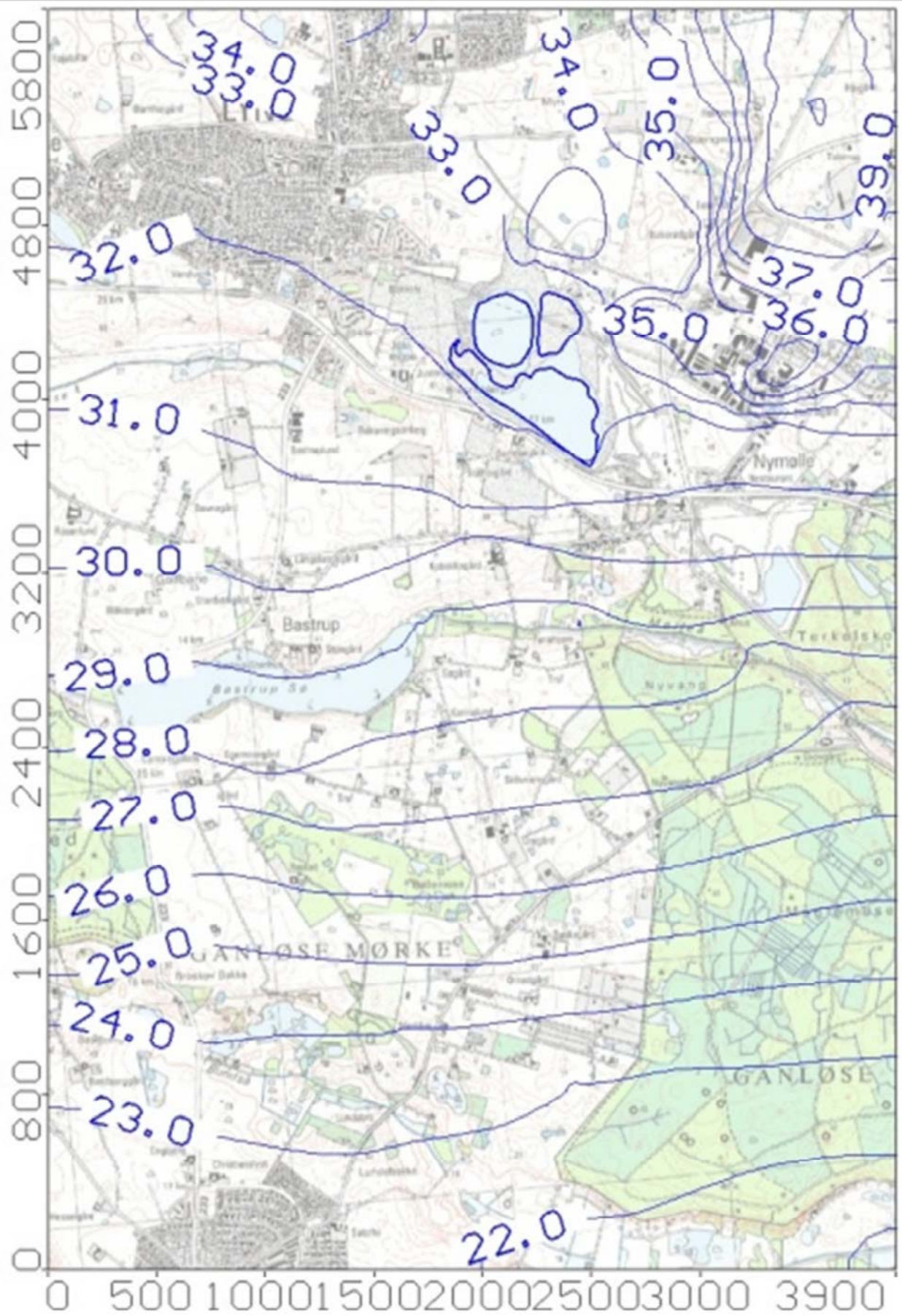

Bilag 4

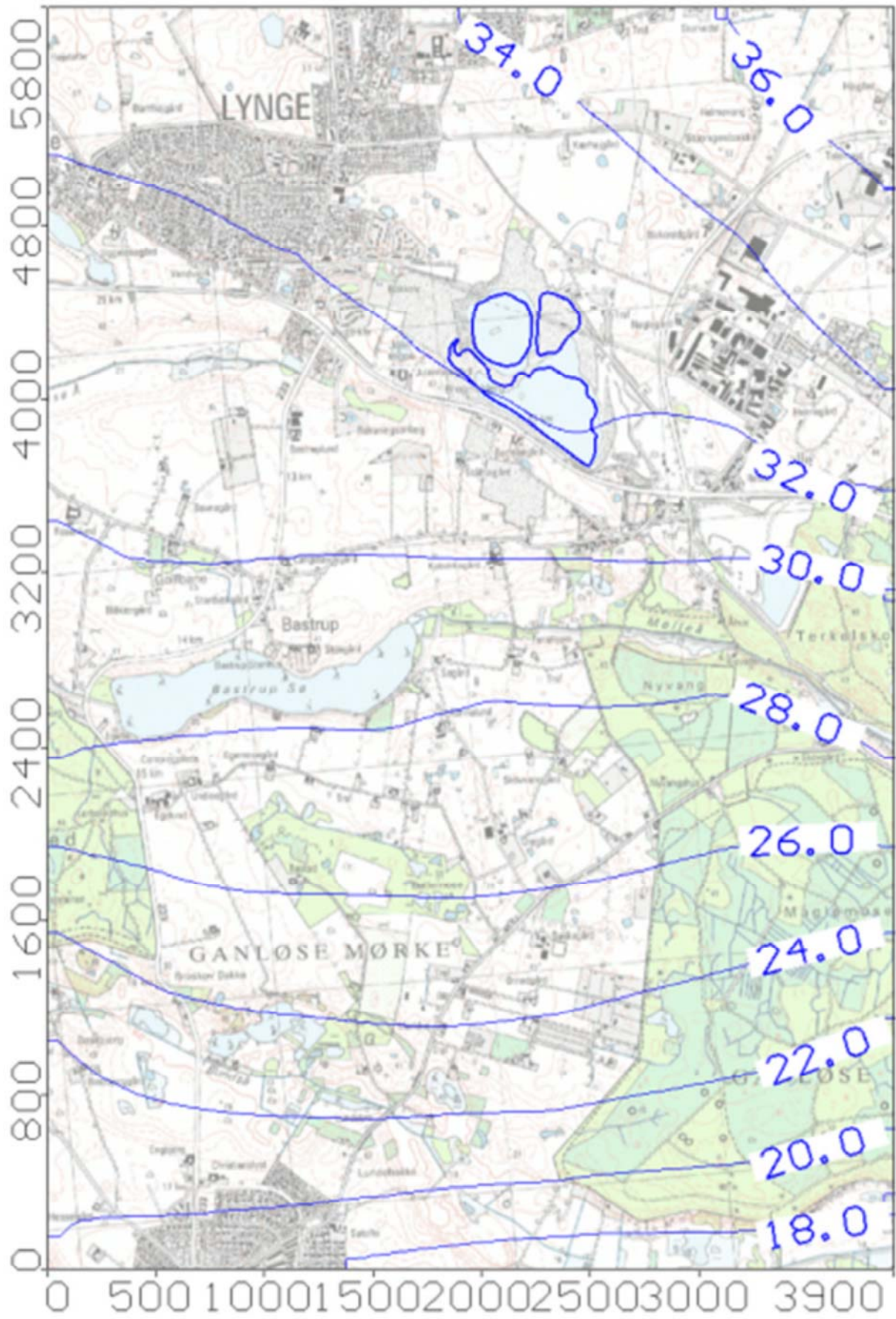
Grundvandspotentiale

Bilag 4a

Potentialekort



Potentiale i kalkmagasinet



Potentiale i nedre del af sandmagasinet

Bilag 4b

Pejleresultater

Pejledata fra 19/4-2012

<i>DGU-nr</i>	<i>Lokalt navn</i>	<i>X</i>	<i>Y</i>	<i>Z-terræn</i>	<i>Pejlepunkt [kote]</i>	<i>Vandspejl [kote]</i>	<i>nedstik</i>
193.2692	B101	6.192.088	705.639	53,39	54,34	32,20	22,14
193.2693	B102	6.192.340	705.548	50,16	50,37	32,28	18,09
193.2694	B103	6.192.552	705.596	51,92	52,63	32,67	19,96
193.2695	B104	6.192.495	705.725	52,35	52,95	32,52	20,43
193.2696	B105	6.192.390	705.742	35,91	36,28	34,08	2,20
193.2697	B106	6.192.180	706.279	40,97	41,71	31,75	9,96
193.2701	B110	6.192.297	706.433	47,04	47,68	32,12	15,56
193.2703	B112	6.192.533	706.312	46,12	46,09	34,46	11,63
193.2704	B113	6.192.565	706.203	45,69	46,04	32,86	13,18
193.2096	B4	6.193.201	706.579	39,76	40,03	39,18	0,85
193.2182	B9	6.193.038	706.292	42,55	42,84	35,81	7,03
193.2556	B1A	6.192.793	706.159	51,12	51,12	36,92	14,20
193.2557	B5A	6.192.883	706.609	39,83	39,83	38,90	0,93
193.2098	B6	6.192.775	706.552	42,35	43,48	36,34	7,14
193.1909	B1 / B8	6.192.690	706.283	44,40	44,40	35,46	8,94
193.2558	B10A	6.192.661	706.086	38,10	39,70	36,10	3,60
193.1342	K2	6.191.642	706.481	42,41	42,52	31,59	10,93
193.1341	K1 (1)	6.191.624	706.582	43,58	41,84	31,84	10,00
193.1341	K1 (2)	6.191.624	706.582	43,58	41,52	31,74	9,78
193.2001	B1	6.191.658	705.999	35,75	36,24	31,72	4,52
193.252	B6	6.191.653	706.118	45,60	45,95	31,73	14,22
193.2154	B5	6.191.558	705.903	55,33	55,25	31,63	23,62
193.2004	B4	6.191.566	706.014	31,91	32,04	31,58	0,46
193.2003	B3	6.191.457	706.104	48,58	49,04	31,35	17,69
193.1192		6.193.754	706.689	45,74	44,03	37,65	6,38
193.1331		6.191.110	707.092	30,81	31,28	30,49	0,79
193.628		6.192.329	707.548	43,06	42,96	36,30	6,66